

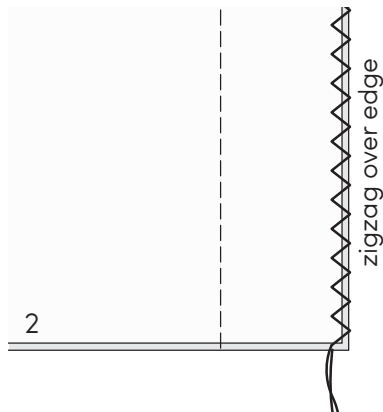
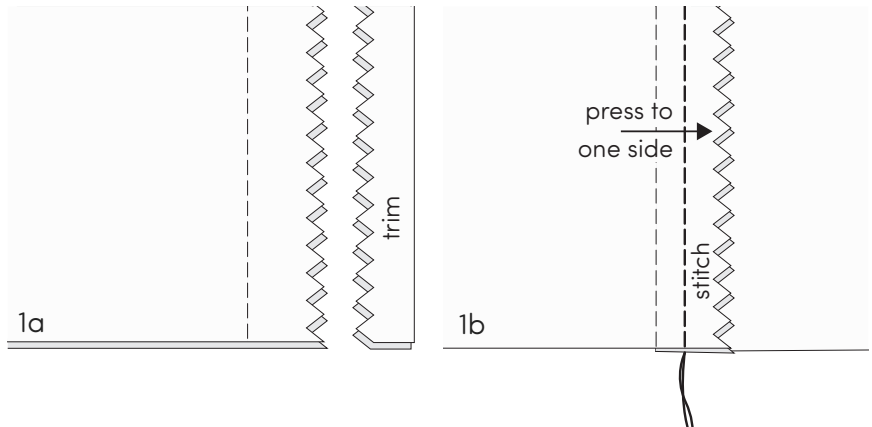
Here are some of my favorite seam finishes! Seam finishes will prevent your seam allowances from fraying and make your seams stronger, which will help your garment last longer.

**note**

For each of the following finishes (except for French Seam), you will start with a 1/2 inch [13 mm] seam, sewn with right sides together, and then proceed with the steps as shown.

## 1. Pink and Stitch Down

- a) With pinking shears, trim both seam allowances to 1/4 inch [6 mm].
- b) Press the seam open and press the seam allowances to one side. Stitch seam allowances down 1/8 inch [3 mm] away from the seam line.



## 2. Zigzag Finish

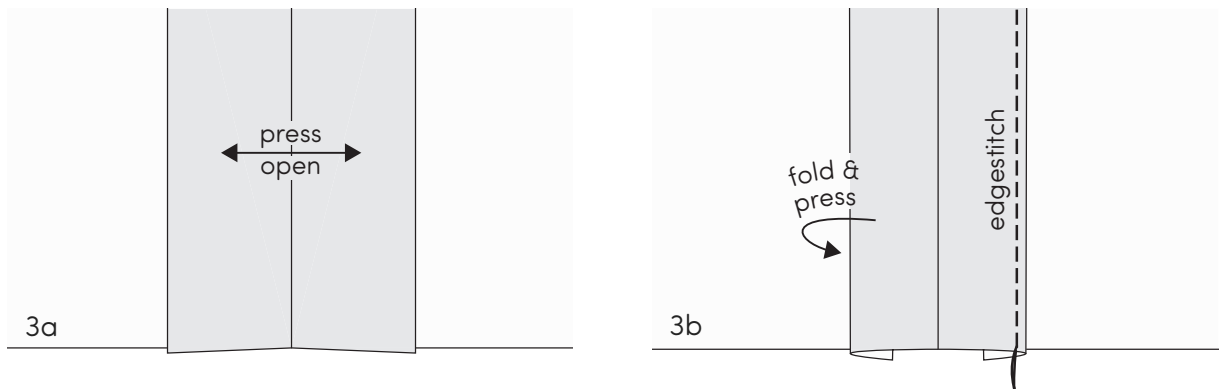
Using a zigzag stitch on your sewing machine, sew the edges of the seam allowances together so that one side of the zigzag goes off the fabric and the other stays on, catching the edges to prevent fraying.

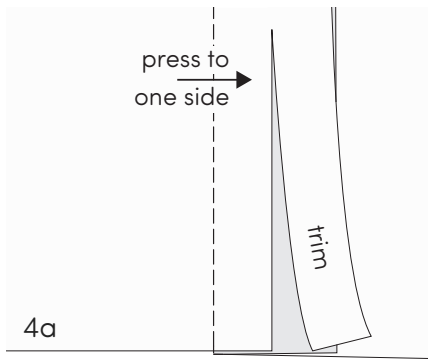
**optional**

You can also press the seam allowances to one side and stitch them down for greater seam strength.

## 3. Clean Finish

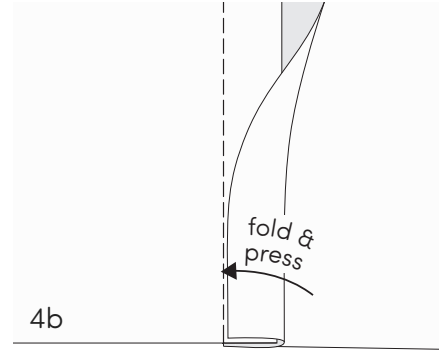
- a) Press the seam open and the seam allowances apart.
- b) Fold each seam allowance edge under, press, and stitch along the fold ("edgesitch") to secure each one in place.



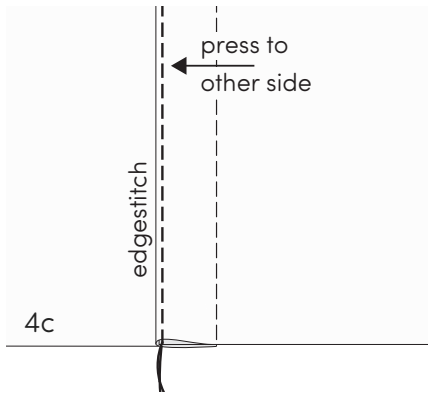


## 4. Flat Fell Seam

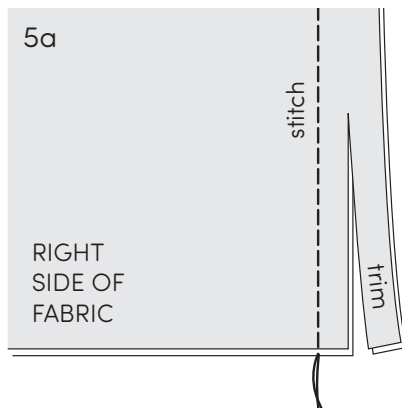
a) Press the seam open and the seam allowances to one side. Trim only the top seam allowance to ¼ inch [6 mm].



b) Fold and press the bottom seam allowance over the top (trimmed) seam allowance so that the bottom seam allowance encloses the top seam allowance.

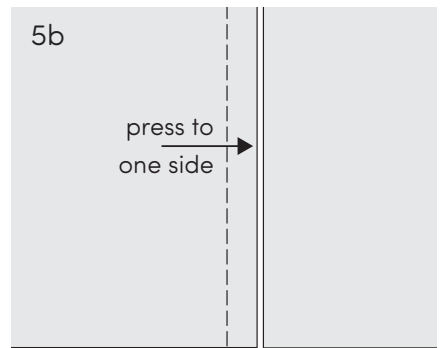


c) Press the seam allowances together to the other side of the seam. Stitch along the folded edge ("edgestitch") to secure the seam.

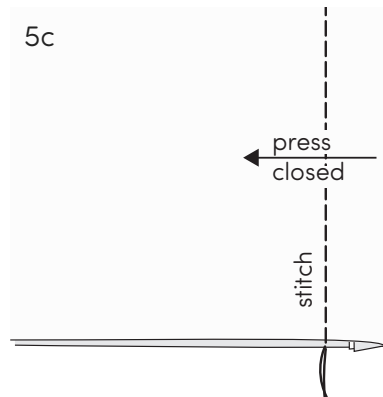


## 5. French Seam

a) Sew the wrong sides of the fabric together with a ¼ inch [6 mm] seam allowance. Trim to ⅛ inch [3 mm].



b) Press the seam open and press the seam allowances to one side.



c) Press the seam closed with the RIGHT sides together and the seam allowances sandwiched between them.

Sew again with a ¼ inch [6 mm] seam allowance. This will finish your seam and enclose your seam allowances so they are completely hidden.